

State of Wyoming Corner Record

(In compliance with the **CORNER PERPETUATION AND FILING ACT**, Wyoming Statutes, 1997 Section 33-29-140 et. seq., and the Rules and Regulations of the Board of Professional Engineers and Professional Land Surveyors)

Reverse side of this form may be used if more space is needed.

Record of original survey and citation of source of historical information (if corner is lost or obliterated). Description of corner monumentation evidence found and/or monument and accessories established to perpetuate the location of this corner. Sketch of relative location of monument, accessories, and reference points with course and distance to adjacent corner(s) (if determined in this survey). Method and rationale for reestablishment of lost or obliterated corner.

ORIGINAL RECORD: Set a granite boulder 18"x10"x7" for cor. Secs. 27, 26, 34 & 35.

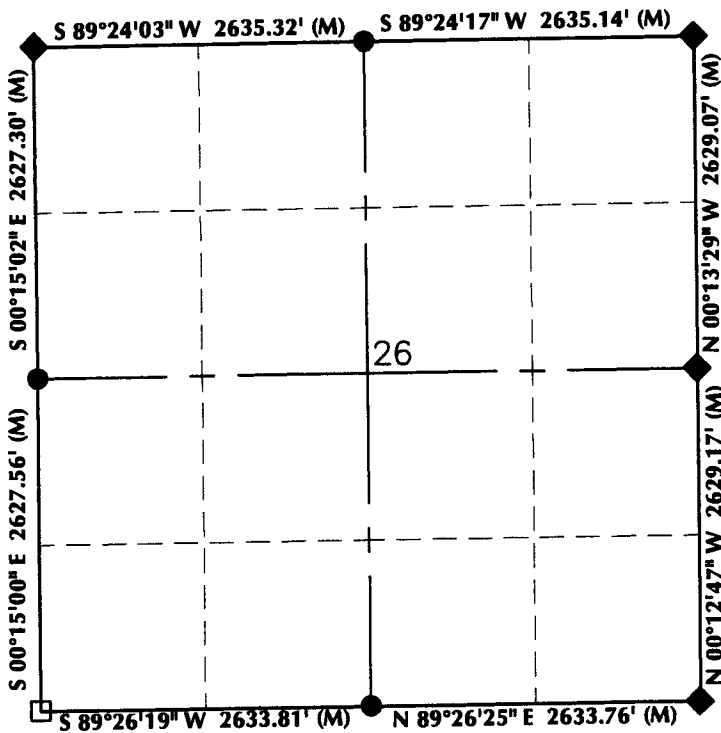
FOUND: 1/2 inch rebar

SET: Held rebar. Set aluminum cap LS 14407. One PK Nail with shiner in fence post 32.4 feet to the S88°50'59"W. One PK Nail with shiner in power pole 48.9 feet to the S42°40'56"W.

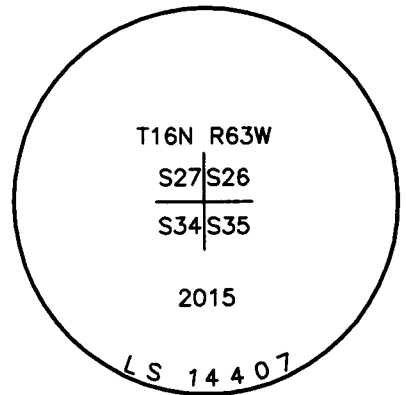
Monument Location



RECP #: 660300
RECORDED 5/4/2015 AT 11:56 AM BK# 2442 PG# 580
Debra K. Lathrop, CLERK OF LARAMIE COUNTY, WY PAGE 1 OF 1



Monument Inscription



NOTES:

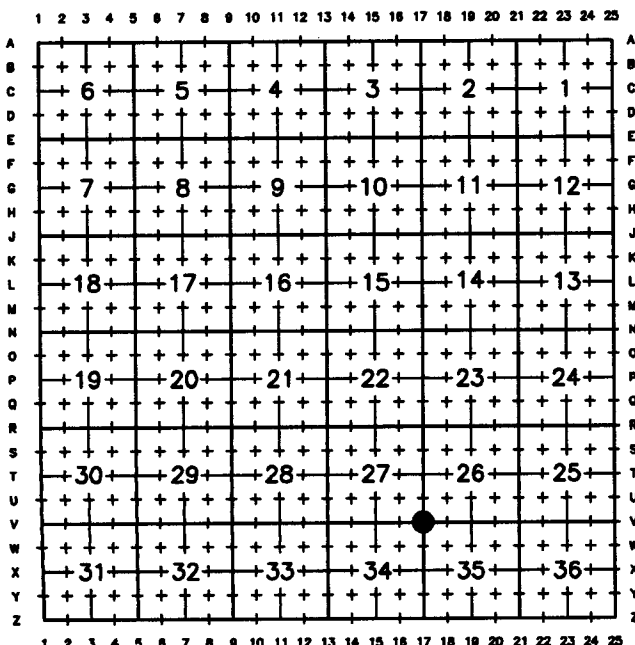
1. ▲ INDICATES FOUND BLM BRASS CAP
2. ■ INDICATES FOUND STONE
3. ● INDICATES FOUND ALUMINUM CAP
4. ◆ INDICATES SET ALUMINUM CAP
5. □ INDICATES SECTION CORNER PER CORNER RECORD
6. BASIS OF BEARING DERIVED FROM WYOMING COORDINATE SYSTEM NAD83 EAST ZONE
7. ALL MEASURED DISTANCES ARE GRID COMBINED SCALE FACTOR: .99972404
8. DRAWING NOT TO SCALE



Date of Field Work: 3/6/15

Office Reference: 14-49

Cross Index Plat



Land Surveyor/Firm/Address

609 Consulting, LLC
1095 Saberton Avenue
Sheridan, WY 82801

Telephone Number: 307-674-0609

This corner record was prepared by me or under my direction and supervision.

SEAL & SIGNATURE

JACOB I. DUNHAM
PROFESSIONAL LAND SURVEYOR
WYOMING REGISTRATION NUMBER 14407

Corner Name: Southwest Corner Section 26, T16N, R63W, 6th P.M. County: Laramie Wyoming

Cross-Index No.: V-17

SBRPEPLS/PLSW: March 1994; PLSW January 1998